

Governance Models and Decision-Making Structures in Higher Education

Sami Hussein¹, Mohammad zadeh¹

Faculty of Education, Cyprus

Abstract:

This article explores the critical governance models and decision-making structures that underpin higher education institutions. It begins with an overview of different governance models, including the traditional collegial model, managerial model, shared governance model, and network governance model. Each model's features, benefits, and challenges are discussed to provide a comprehensive understanding of their application in higher education. The article then examines key decision-making structures such as boards of trustees or regents, university presidents or chancellors, academic senates, administrative committees, and student governments. By balancing efficiency with broad participation, these governance frameworks ensure the effective and inclusive management of higher education institutions. The article concludes by emphasizing the need for adaptable governance structures to meet evolving challenges and opportunities in the higher education landscape.

Keywords: Governance model, Features, Structure, Higher Education.

Introduction:

Higher education institutions operate within complex frameworks requiring effective governance models and decision-making structures. These systems are vital for maintaining academic integrity, fostering innovation, and ensuring accountability. This article examines various governance models and decision-making structures in higher education, highlighting their characteristics, advantages, and challenges. Effective governance and decision-making are essential components of higher education institutions. These frameworks not only support the administrative and academic functions but also ensure the institutions' integrity, innovation, and accountability. By exploring various governance models and decision-making structures, we can better understand how higher education institutions navigate their complex organizational landscapes. This article delves into the most prevalent governance models, examines their unique

characteristics, and discusses the benefits and challenges associated with each. Additionally, it outlines the key decision-making structures that play a pivotal role in shaping the strategic and operational aspects of higher education.

Governance Models:

Traditional Collegial Model

Description: The traditional collegial model emphasizes shared governance among faculty members who make decisions collectively through committees and senates.

Benefits: This model encourages democratic participation, values academic freedom, and leverages faculty expertise.

Challenges: Decision-making can be slow and cumbersome, and reaching consensus may be difficult.

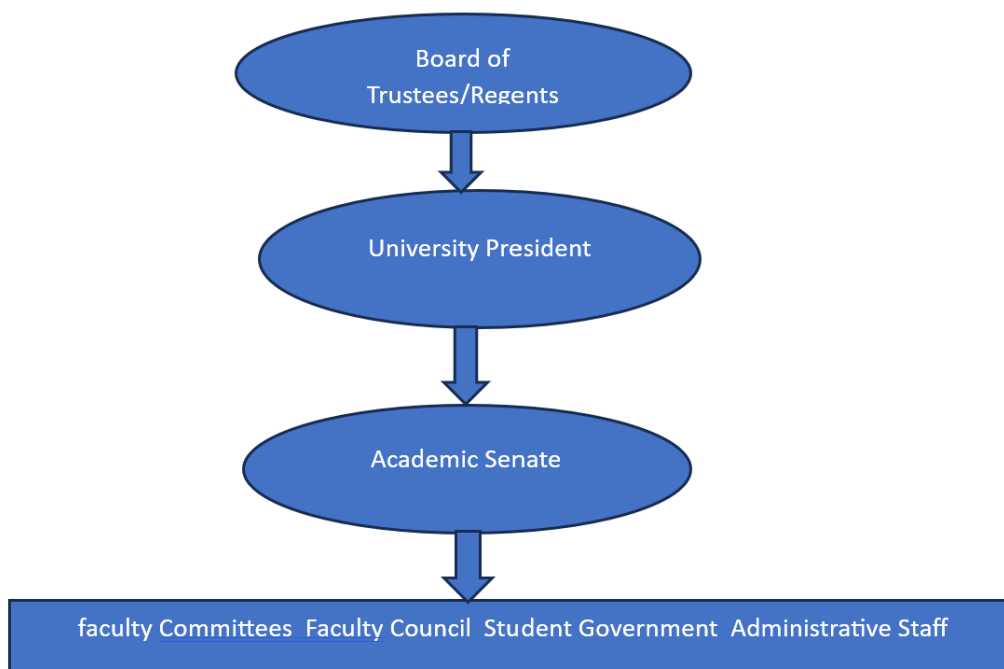


Figure 1: Governance Model

Managerial Model

Description: The managerial model resembles corporate governance with a hierarchical structure where senior administrators make decisions, often consulting with selected committees.

Benefits: It enables quick decision-making and efficient policy implementation while providing clear accountability.

Challenges: This model may limit faculty involvement and can lead to perceptions of top-down management.

Shared Governance Model

Description: The shared governance model integrates elements of collegial and managerial models, involving faculty, administrators, and sometimes students in decision-making processes.

Benefits: It balances efficiency with broad participation, ensuring various stakeholders have a voice.

Challenges: Effective collaboration requires careful coordination and communication to avoid conflicts.

Network Governance Model

Description: This model involves multiple institutions or units within a larger system working together through networks and partnerships, distributing decision-making authority.

Benefits: It promotes innovation through collaboration and resource-sharing and is flexible and adaptive.

Challenges: Coordination can be complex, and accountability may be diluted.

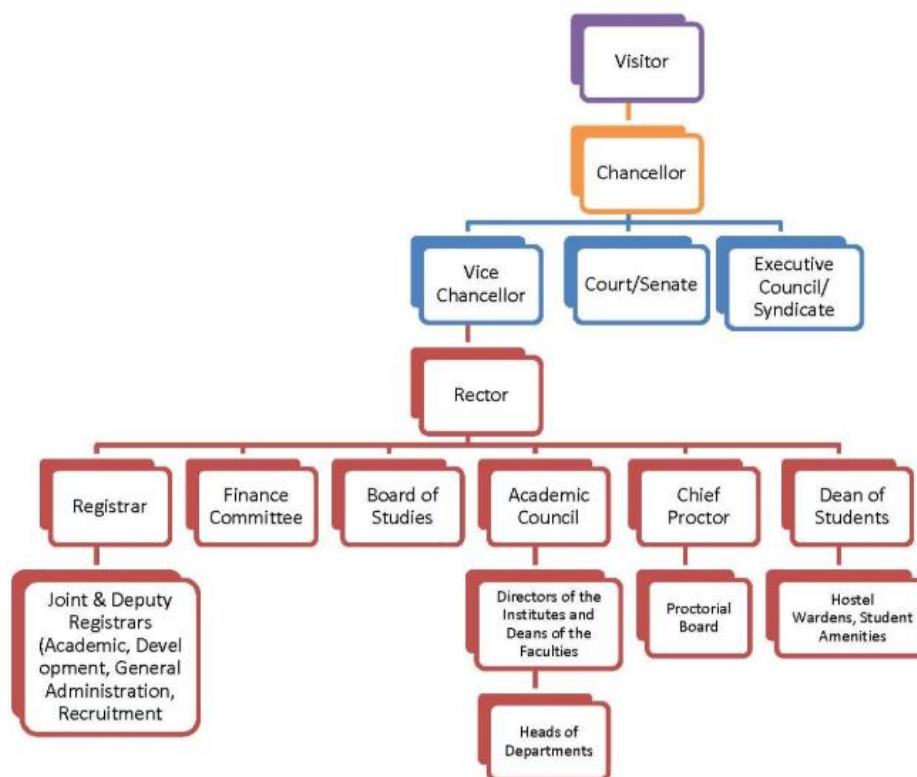


Figure 2: Network Governance Model

Decision-Making Structures

Board of Trustees/Regents

Role: The board of trustees or regents is typically the highest governing body, responsible for major policy decisions, financial oversight, and strategic direction.

Composition: It usually comprises external members bringing diverse expertise and perspectives.

University President or Chancellor

Role: The president or chancellor acts as the chief executive officer, implementing the board’s policies and overseeing day-to-day operations.

Responsibilities: This role includes strategic planning, external relations, and academic leadership.

Academic Senate

Role: The academic senate represents the faculty, significantly influencing academic policies, curriculum, and standards.

Function: It serves as a forum for discussing academic matters and providing recommendations to the administration.

Administrative Committees

Role: These committees focus on specific areas such as finance, facilities, student affairs, and research.

Function: They provide specialized advice and support decision-making in their respective domains.

Student Government

Role: Student government represents the student body, participating in governance, particularly in areas affecting student life.

Function: It ensures that student perspectives are included in decision-making processes.

Balancing Efficiency and Participation:

Effective governance in higher education requires balancing efficiency with broad participation. While managerial models offer swift decision-making, collegial and shared governance models ensure decisions are informed by diverse perspectives from faculty, staff, and students. Institutions often adopt hybrid approaches, combining elements of different models to suit their unique contexts and challenges.

Literature Review:

The article begins with an extensive review of existing literature on governance models and decision-making structures in higher education. Academic journals, books, and reputable online sources are examined to gather comprehensive information about the various governance models and their implementation in different institutions.

Comparative Analysis

A comparative analysis is conducted to evaluate the features, benefits, and challenges of each governance model. This involves examining case studies and examples from diverse higher education institutions to highlight how these models function in real-world settings.

Expert Insights

The methodology also incorporates insights from experts in the field of higher education governance. This includes interviews with academic leaders, administrators, and governance professionals who provide firsthand perspectives on the effectiveness of different models and structures.

Synthesis and Integration

The gathered information is synthesized to provide a cohesive overview of governance models and decision-making structures. The article integrates theoretical perspectives with practical examples to present a balanced and comprehensive analysis.

Evaluation of Effectiveness

Finally, the article evaluates the effectiveness of different governance models in fostering innovation, ensuring accountability, and maintaining academic integrity. This evaluation is based on both the literature review and the expert insights gathered.

By combining these methodologies, the article aims to offer a detailed and nuanced understanding of governance and decision-making in higher education, providing valuable insights for academic leaders and policymakers.

Conclusion:

Governance models and decision-making structures are crucial for the success and sustainability of higher education institutions. Understanding the strengths and limitations of various models allows higher education leaders to design frameworks promoting transparency, inclusivity, and effective decision-making. As the higher education landscape evolves, these governance structures must adapt to new challenges and opportunities, ensuring institutions can fulfill their educational missions and societal responsibilities.

Reference:

1. Bess, J. L., & Dee, J. R. (2008). *Understanding College and University Organization: Theories for Effective Policy and Practice*. Sterling, VA: Stylus Publishing.
2. Kezar, A. J., & Eckel, P. D. (2004). Meeting Today's Governance Challenges: A Synthesis of the Literature and Examination of a Future Agenda for Scholarship. *The Journal of Higher Education*, 75(4), 371-399.
3. Shattock, M. (2002). Re-balancing Modern Concepts of University Governance. *Higher Education Quarterly*, 56(3), 235-244.
4. Duderstadt, J. J. (2000). *A University for the 21st Century*. Ann Arbor: University of Michigan Press.
5. Kaplan, G. E. (2004). How Academic Ships Actually Navigate. In W. G. Tierney (Ed.), *Competing Conceptions of Academic Governance: Negotiating the Perfect Storm*. Baltimore: Johns Hopkins University Press.



6. Chait, R. P., Ryan, W. P., & Taylor, B. E. (2005). *Governance as Leadership: Reframing the Work of Nonprofit Boards*. Hoboken, NJ: Wiley.
7. Bowen, W. G., & Tobin, E. M. (2015). *Locus of Authority: The Evolution of Faculty Roles in the Governance of Higher Education*. Princeton, NJ: Princeton University Press.
8. Gornitzka, Å., & Maassen, P. (2000). Hybrid Steering Approaches with Respect to European Higher Education. *Higher Education Policy*, 13, 267-285.
9. Olsen, J. P. (2007). The Institutional Dynamics of the (European) University. In P. Maassen & J. P. Olsen (Eds.), *University Dynamics and European Integration*. Dordrecht: Springer.
10. American Association of University Professors (AAUP). (1966). *Statement on Government of Colleges and Universities*. Retrieved from <https://www.aaup.org/report/statement-government-colleges-and-universities>